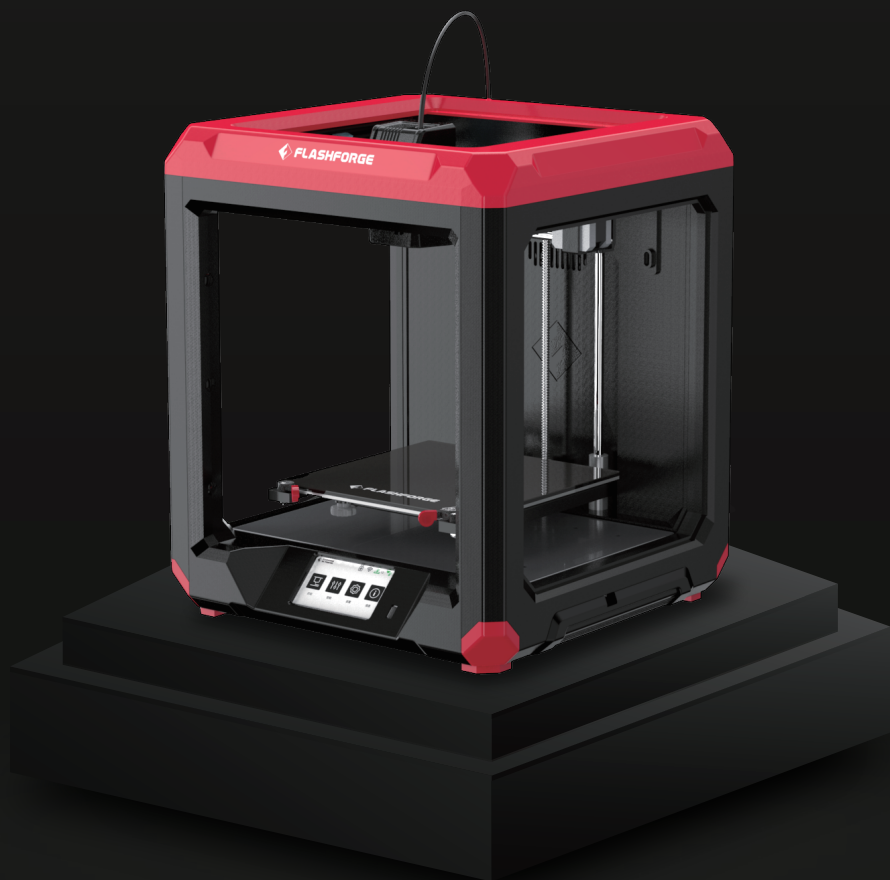
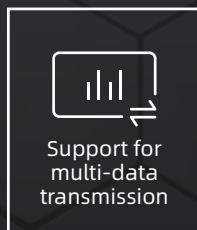
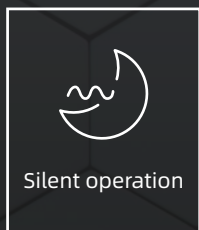
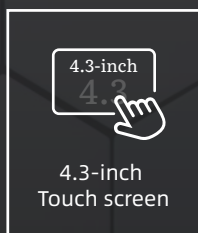
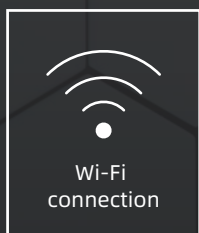




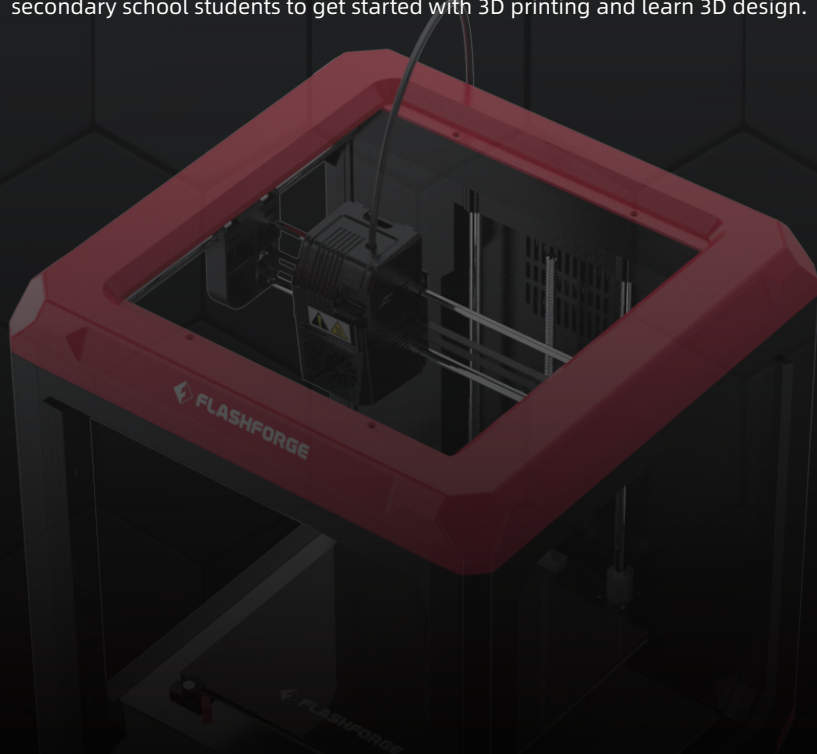
FINDER 3.0

Finder 3.0, the king of cost performance among
desktop 3D printers, offering both powerful
functions and fun



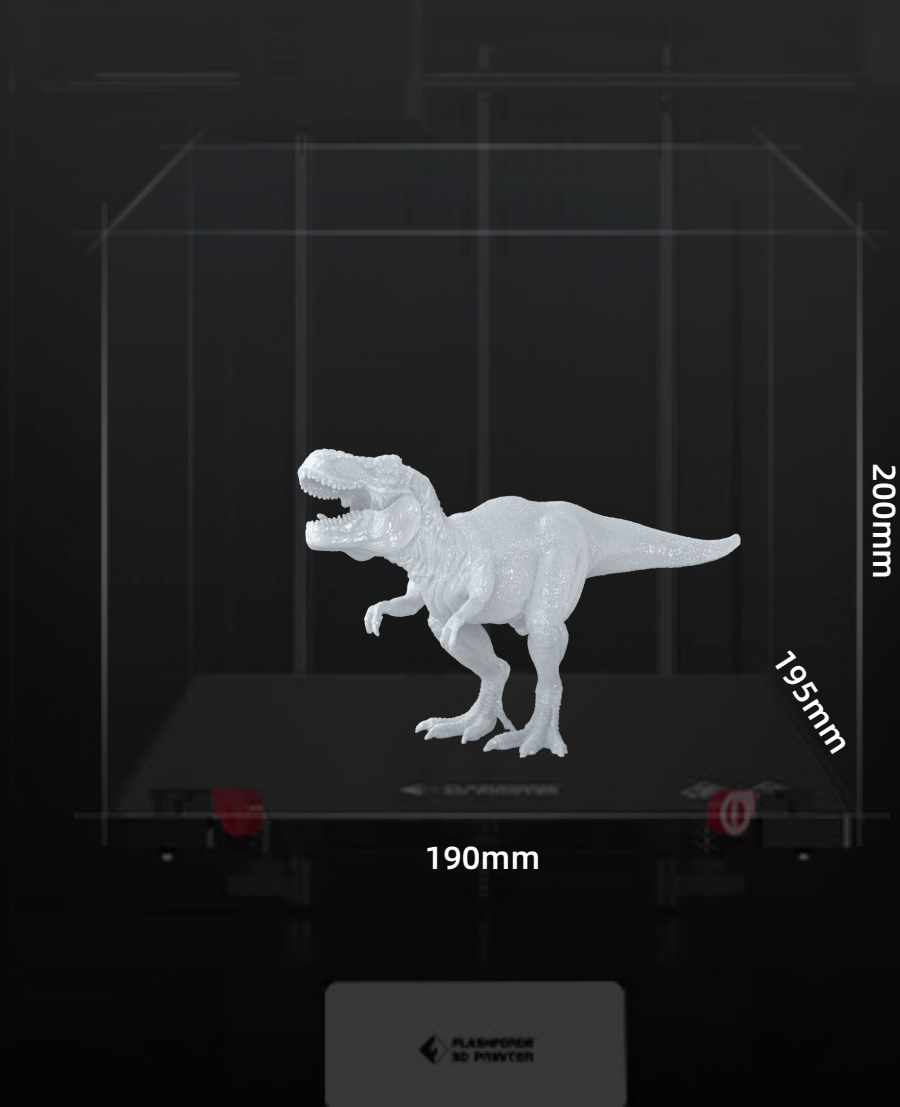


Finder 3.0 is a safe, efficient and intelligent desktop 3D printer. On the basis of Finder 2.0, it is upgraded with functions such as power loss recovery, filament run-out reminder and support for TPU 95A flexible filament printing. It is very suitable for hobbyists and home users, and is the first choice for primary and secondary school students to get started with 3D printing and learn 3D design.



Larger size, unlocking your imagination

Compared with Finder 2.0, Finder 3.0 features a device size of 406×416×469mm and a build volume of **190×195×200mm**, achieving higher volume utilization. Its **200mm** vertical Z-axis height can also meet the printing needs of most users.

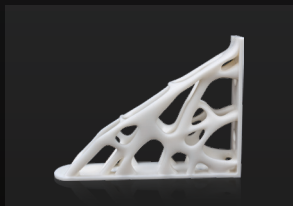
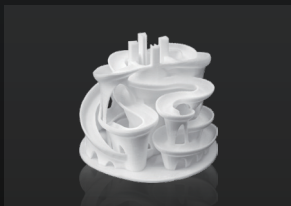




Maximum extruder
printing temperature:

260°C

ABS / HIPS / PETG / PETG PRO / TPU 95A



Its direct drive extruder design and the heating temperature up to 260°C achieve smoother filament feeding. Finder 3.0 not only supports printing ABS/HIPS/PETG/PETG PRO filaments, but also meets the printing requirements of TPU 95A flexible filament and third-party filaments. It offers stronger compatibility and wider application range.

Power loss recovery & Filament run-out reminder

Newly added functions of power loss recovery and filament run-out detection: In the event of an unexpected power failure, it can save the printing status and continue printing after the power is restored. When the filament is used up or accidentally broken, it will alarm and pause printing, and then continue printing after the filament is replenished or replaced.

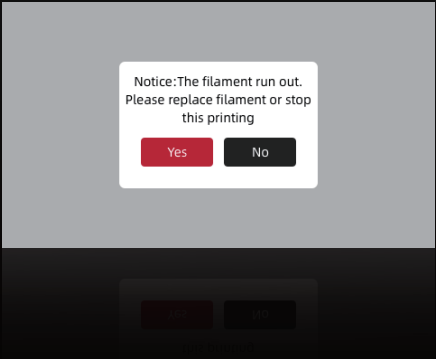
Power loss recovery



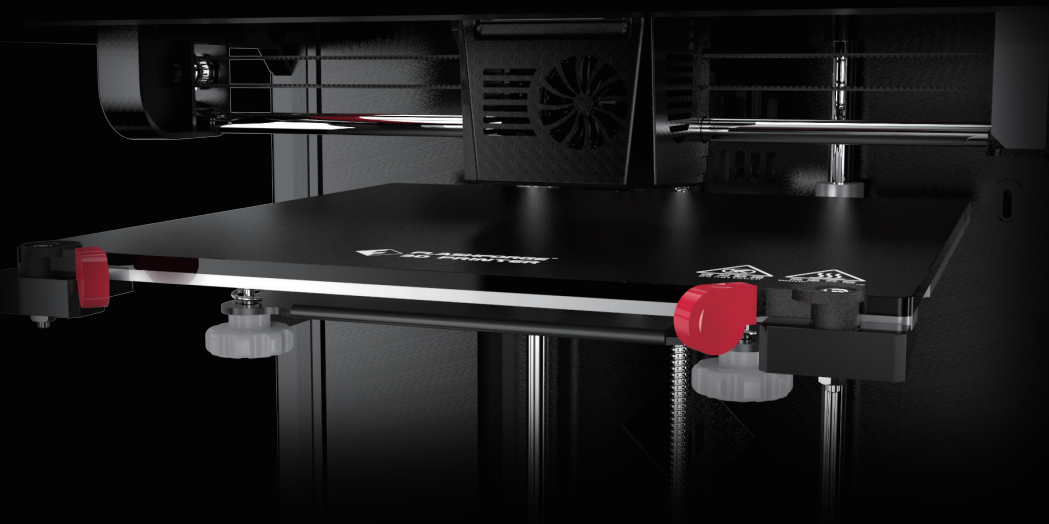
Power outage during printing

Resume printing after the power is restored

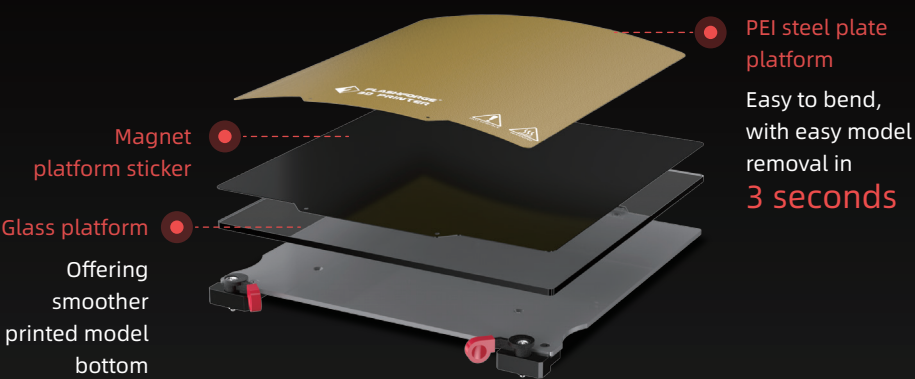
Filament run-out reminder



Dual platform options for individual needs



It provides removable glass platform and PEI magnetic steel plate platform, which can both be easily removed and replaced to meet diversified printing needs.



Specifications

Machine Type	Finder 3.0
Extruder Type	Direct drive extruder
Nozzle Diameter	0.4mm
Maximum Extruder Temperature	260°C
Platform Heating Temperature	≤110°C
Printing Precision	±0.2mm
Printing Speed	≤180mm/s
Build Volume	190×195×200mm
Supported Filament	PLA/ABS/HIPS/PETG/PETG PRO/TPU 95A
Touch Screen	4.3-inch
Language	Chinese/English/Japanese/French/ German/Spanish
Connectivity	USB/Internal storage/Wi-Fi
Assisted Leveling	√
Resume Printing After Power Failure	√
Filament Run-out Reminder	√
Removable Platform	√
Silent Operation	√
Camera	×

Finder 3.0



Follow Us

Zhejiang Flashforge 3D Technology Co., Ltd.

Address: No.518 XianYuan Road, Jinhua City, Zhejiang Province, China

Service Hotline: +86 579 82273989

support@flashforge.com