

SWIT

21.5"

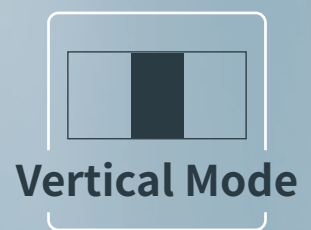


FM-215HDR 1000nits

HDR QLED Field Monitor



4K
Input
Ready





Cheese plate



Screen protector



VESA adaptor
■ Optional



For on-site production in complex environments

The lightweight flight case and screen protector provide strong protection for the monitor body. Double cheese plates on top can be expanded with a variety of accessories. Aluminum alloy VESA mount adaptor (Optional) allows it to be adapted to standard light stand.

Multiple video and control signal I/O Suitable for both film and broadcast

SDI1 OUT: 12G/6G/3G/HD/SD-SDI
SDI2 OUT: 3G/HD/SD-SDI

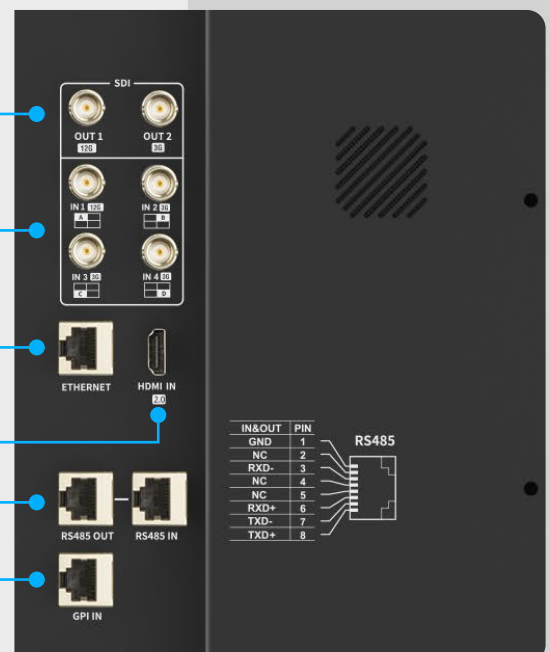
SDI1 IN: 12G/6G/3G/HD/SD-SDI
SDI2~4 IN: 3G/HD/SD-SDI

ETHERNET

HDMI® 2.0 4K@60FPS

RS485 OUT/IN: TSL UMD Control

GPI IN: GPI Control





Quadview/PBP/PIP view and vertical mode

Support 4x SDI/HDMI® mixed multiview and display waveform, vector, audio meters, EOTF, color gamut, UMD for each input. Support 2 inputs PBP or PIP display.

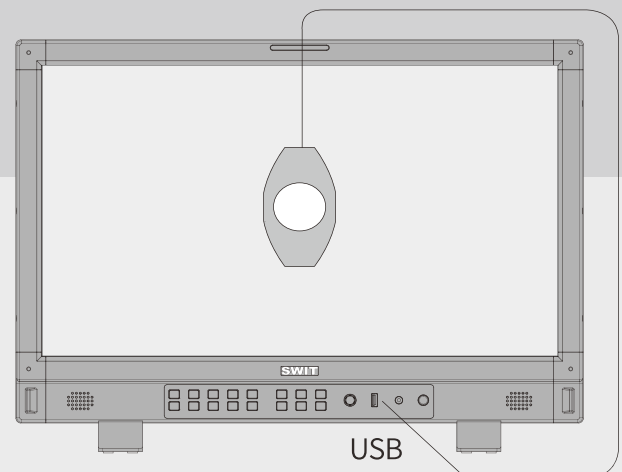


Produce horizontal and vertical content simultaneously

Support any 2 inputs horizontal and vertical (cropped) image display (vertical mode), to meet content production needs and ensure adaptability to traditional horizontal screen and mobile phone vertical screen display effects.

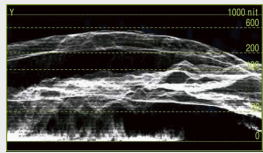
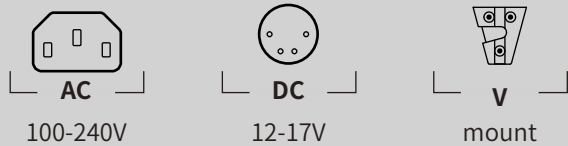
3DLUT Auto Self-Calibration

With built-in 3DLUT calibration software, (software copyright) support X-rite i1 and Jetti Specbos 1211 probes to directly connect with the monitor USB port.

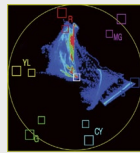


Multiple power supply

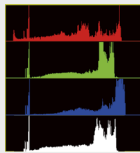
FM-215HDR consumes 60W power, supports both AC 100-240V input and 4-pin XLR DC 12-17V input, and equipped with a V-mount battery plate on the rear panel. (Gold mount for option)



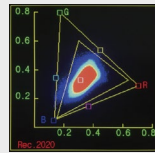
Y/Cb/Cr/R/G/B Waveform with nits
Support single line waveform



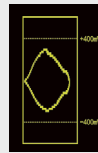
Vector Scope



R/G/B/Y
Histogram



Rec. 709/2020
Color Gamut Pattern



Eye Pattern

Video Assist Patterns 12G-SDI Eye Pattern

Specifications

Model		FM-215HDR
Display	Size	21.5 inches
	Resolution	1920 × 1080
	Aspect Ratio	16:9
	Color Depth	10bit (8+2FRC)
	Internal Processing	18bit
	Viewing angle	H/V 178/178
	Brightness	1000nits
	Contrast	1000:1
Input	SDI 1	12G/6G/3G/HD-SDI × 1
	SDI 2/3/4	3G/HD-SDI × 3
	HDMI®	HDMI® 2.0 4K@60 × 1
	UMD	RS485 × 1
	GPI (Tally)	RS485 × 1
	Ethernet	RJ45 × 1, 1000M
	USB	USB-A × 1 - 3DLUT & Firmware
Output	SDI 1	12G/6G/3G/HD-SDI Loop × 1
	SDI 2	3G/HD-SDI loop × 1
	Analog audio	3.5mm headphone + Speaker
	UMD	RS485 × 1
General	AC Input	AC 100-240V 50/60Hz
	DC Input	DC 12-17V, V-mount plate
	Power	≤60W
	Working environment	0°C - +40°C; 10% - 90%
	Storage environment	- 15°C - + 60°C; 10% - 90%
	Dimensions	570 × 405 × 260mm
	Weight(Monitor)	7.28KG

