

הולחם

iSTEADY V2
AI Smartphone Gimbal

V1.0

Contents

- 01 Download the Hohem Pro App
- 02 iSteady V2 Overview
- 03 Mounting and Balancing
- 04 Activation & Bluetooth Connection
- 05 AI Visual Tracking & LED Video Light
- 06 Button Function
- 07 Working Mode & Follow Speed
- 09 How to fold the gimbal?
- 09 Use as emergency power bank
- 09 How to do if the gimbal is not level after powering on?
- 10 Power indicator and Bluetooth indicator function
- 11 Specifications
- 11 Warranty Card

Disclaimer and Warning

Thank you for purchasing the Hohem product. By using this product, you hereby signify that you have read this disclaimer and warning carefully and that you understand and agree to abide by the terms and conditions herein. You agree that you are solely responsible for your own conduct while using this product, and for any consequences thereof. You agree to use this product only for purposes that are proper and in accordance with all applicable laws, rules, and regulations, and all terms, precautions, practices, policies and guidelines Hohem has made and may make available. Hohem accepts no liability for damage, injury or any legal responsibility incurred directly or indirectly from the use of this product. The user shall observe safe and lawful practices including, but not limited to, those set forth in this document.

Important Notes:



- When powering on iSteady V2 at first use, activation is required through Hohem Pro app.
- iSteady V2 works after the activation.
- Mount your mobile phone before powering on iSteady V2.
- If no mobile phone is detected or the motor is overloaded due to phone is not level, the gimbal will shut down after a warning beeping.

Download the Hohem Pro App, Register and Login



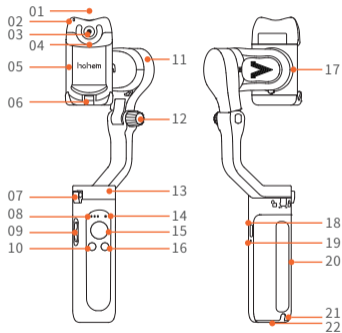
Scan the QR code to enter the download page

Search " Hohem Pro " in the App Store or Google Play

*Hohem Pro app requires iOS 10.0 or above, Android 6.0 or above

*More product tutorials can be found on the app homepage

iSteady V2 Overview



- 01. AI Vision Sensor & LED Video Light Power Button
- 02. AI Vision Indicator
- 03. AI Vision Sensor
- 04. LED Video Light
- 05. Phone Clamp
- 06. Folding Lock A
- 07. Folding Lock B
- 08. Battery Indicator
- 09. Zoom Slider
- 10. Shutter Button
- 11. Tilt Motor
- 12. Knob
- 13. Pan Motor
- 14. Bluetooth Light
- 15. Joystick
- 16. Power (ON/OFF) / Function Button
- 17. Roll Motor
- 18. Bidirectional charging port (Type C)
- 19. Reset
- 20. Handle (Battery built-in)
- 21. Lanyard Hole
- 22. 1/4 inch Screw Port

How to mount and balance mobile phone on the gimbal?



①

Unfold the
gimbal



②

Screw up the
knob



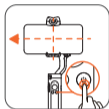
③

Turn the
"hohem" logo
upward



④

Put your phone
stuck in the
bottom of phone
clamp and pull
the head of
phone clamp to
mount your
phone.



⑤

Slide the phone
and make sure it
is clamped in the
middle, power on
the gimbal after
balancing the
phone clamp.



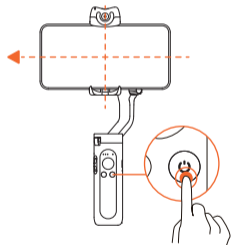
The gimbal would work improperly if not screw the knob up.



Clench the phone clamp, ensuring that your phone is cling to the rubber mat, otherwise the gimbal would vibrate or turn off automatically.

Booting up iSteady V2 at first use Activation & Bluetooth Connection

For the first time, please turn on the gimbal. Log into the Hohem Pro app to activate the gimbal. Gimbal will work improperly if not been activated.



① Startup

Long press the function button. At the first start, it will enter a to-be-activated state and the Bluetooth indicator will flash alternatly in red and green.

② Bluetooth connection through the APP

Turn on the bluetooth of phone. Log into the app Hohem Pro. Following the notice at the top for connection.

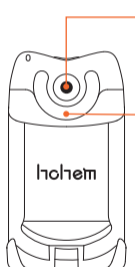
③ Activate iSteady V2

After the Bluetooth is connected, an activation prompt box will pop up. Click "Confirm" to complete the activation. Three beeps for noticing you the activation has done, and you can use the gimbal now.

AI Visual Tracking & LED Video Light

To enable this function, please press AI vision sensor & LED video light power button, AI vision indicator will turn red and the LED video light will show double flash.

*Please ensure that the gimbal has turned on before enabling this function. For closing this function, please long press AI vision sensor & LED video light power button.



① AI Visual Tracking

Switch between landscape and portrait mode: Two hands facing towards the AI vision sensor
Landscape mode: Thumbs-up
Portrait mode: Thumbs-right

Start smart tracking: take a OK gesture towards the AI vision sensor, AI vision indicator will turn green

Turn off smart tracking: show a palm gesture towards the AI vision sensor and AI vision indicator will turn red

*Please ensure that only both the face and gesture appear together in front of the sensor, the smart tracking will be activated.

② LED Video Light

Press AI vision sensor & LED video light power button to adjust the light intensity, LED turns according to low-medium-high-close modes.

Button Function

① Power (ON/OFF) / Function Button

Long Press: Power On/Off

Single Press: Switch the landscape and portrait modes

Double Press: Recenter the gimbal

Triple Press: Inception (Auto rotation)

Press Five Times: Auto calibration

Press Seven Times: Remote control pairing

The bluetooth light will flash alternatly in yellow and green.

(The remote control is an optional accessory)

a. If the remote control is not paired within 30 seconds, the pairing will be cancelled;

b. Click the function button to cancel pairing;

c. Double-click the function button to clear the paired remote control and cancel pairing;

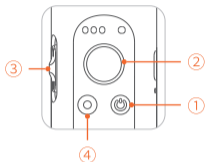
(And the paired remote control will be unavailable and need to be re-paired)

③ Zoom Slider

(Only available in the app)

Push Up: Zoom in

Push Down: Zoom out



② Joystick

Up/Down: Tilt Control

Left/Right: Pan Control

(It is able to control the roll motor through Left/Right Joystick Settings in Hohem Pro app)

④ Shutter Button (Ensure the Bluetooth is connected)

Single Press: Take photo, Start/End video

Double Press: Switch photo/video modes

Triple Press: Switch front/rear cameras (Only available in the app)

How to switch working modes by button?

Combination operation: Press and hold shutter button and tap power button

Single Tap: Pan&Tilt Follow (Default)

Double Tap: Pan Follow

Triple Tap: All Lock

Quartic Tap: POV (All Follow)

*Tips: To ensure proper operation, please release the shutter button after the power button.

Working Mode & Follow Speed

*For changing working mode or follow speed, please open Hohem Pro app - Start Recording - Gimbal Parameter Settings

*Ensure the Bluetooth is connected and change the settings

Working Mode

Pan&Tilt Follow

This is the default working mode. When you rotate the handle left/right/tilt up/tilt down, the camera will follow the handle movements, and the roll motor is locked without following the movement.

Pan Follow

When you rotate the handle left/right, the camera will follow the handle movements. The tilt motor does not follow within the angle range of -30° ~ $+30^{\circ}$ movement, if exceed this range, the gimbal will follow the tilt movement, and the roll motor is locked without following the movement.

All Lock

The roll and pan motors are locked without following the movement. The tilt motor does not follow within the angle range of -30° ~ $+30^{\circ}$ movement, if exceed this range, the gimbal will follow the tilt movement.

POV (All Follow)

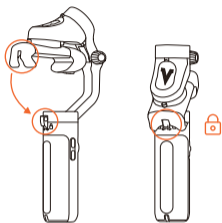
First person point of view

Gives you 360° complete movement, you can pan, tilt and roll with it.

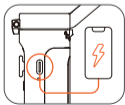
Follow Speed

- General Shooting with general follow speed
- Slow Shooting with slow follow speed
- Medium Shooting to follow the fast movement
- Fast Fast follow speed for video transition

How to fold Gimbal?



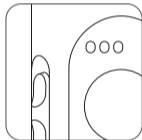
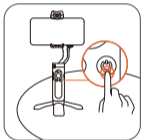
Use as emergency power bank



The gimbal can be used as emergency charging for your mobile phone and other electronic devices.

How to do if the gimbal is not level after powering on?

If the gimbal is not level after turned on, or pan axis is slight drift when the gimbal is still, please calibrate the gimbal on a stationary and horizontal surface.



- ① Turn on the gimbal, press function button 5 times
- ② Start calibration after a beep sound
- ③ The battery indicator light keep flashing
- ④ The calibration is done after two beeps sound (the calibration takes about 40 seconds)

Power indicator and Bluetooth indicator function



Power Indicator Lights

Stay on: Fully charged or charging complete

Single flashing: Charging

Continuous Flashing: Calibrating



Bluetooth Indicator Light

1. A. Blinks red and green alternatively:

To be activated (at first use)

B. Blinks yellow and green alternatively:

The remote control is pairing (The remote control is an optional accessory)

2. Color indicates the status of gimbal

Green: Bluetooth is connected

Yellow: Bluetooth is not connected

Red: Warning of abnormal loads on the stabilizer or failed firmware upgrade

3. Blinking indicators of working modes

Solid Light: Pan & Tilt Follow

Flash twice: Pan Follow

Flash triple: All Lock

Flash four times: POV (All Follow)

Pulse: Standby mode

Specifications

Model	iSteady V2
Weight	263g
Folded Dimensions	179 X 79 X 39 mm
Battery	18650li-ion 2800mAh
Operating Time	9 hours 4 hours (with AI vision sensor) 2 hours (with AI vision sensor & LED video light)
Bidirectional charging port (Type C) supports gimbal works while charging.	
Mechanical Range	* Pan: 320° * Roll: 320° * Tilt: 320°
Controllable Range	* Pan: 320° * Tilt: -30°~+30°
Compatible Phones	Weight : ≤280g Thickness: ≤11 mm Width: 55mm~90mm

The motor would be shown in the screen due to some of mobile cameras are designed at the middle of phone, such as Xiaomi10, Xiaomi10 Pro, Xiaomi CC9 PRO.

Warranty Card

User Name: _____

Contact No.: _____

Address: _____

Purchase Date: _____

Prod. Serial No.: _____

Failure Issue: _____

Service Record: _____

1. Within 15 days upon the purchase date. Any functional disorder or quality problem enjoys free replacement service. But ensure the commodity and package with no damage, and we will offer a brand new replacement after confirming the product problem.
2. Warranty valid only under normal use.
3. Used in the normal circumstances, 1 year warranty, maintenance of life (not include the All accidents or artificial damage, improper disassembly or misuse damage is NOT covered by the warranty.)
4. Please keep and offer the warranty card for claiming the warranty service.

CALL CENTER -Toll Free

UNITED STATES:+1(888)9658512

Mon-Fri: 9:00AM-5:00PM(EST)

UNITED KINGDOM:+44(0)808 2737578

Mon-Fri: 2:00PM-10:00PM(GMT +0)

GERMANY:+49(0)800 0010109

Mon-Fri: 9:00AM-5:00PM(GMT +1)

CANADA:+1(855)758-8939

Mon-Fri: 9:00AM-5:00PM(EST)

BRAZIL:+55 (0)800 5911897

Mon-Fri: 10:00AM-6:00PM(GMT -3)

Contact us

Email: service@hohem.com

Website: www.hohem.com

Manufacturer: Hohem Technology Co., Ltd.

Contact us at Facebook

-@HohemTechOfficial-