

Let's get technical.

A28



 **audio pro**
SOUND OF SCANDINAVIA

INTRODUCTION

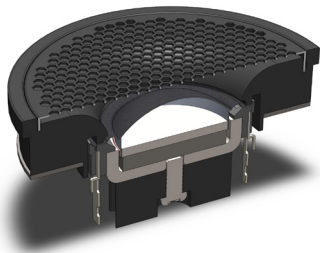
At AudioPro we have designed active speakers since 1978. From the legendary A4-14 - an active 3-way standmount and the B2-50 subwoofer all equipped with the patented AceBass technology.

The A28 continues the legacy with the use of state of the art DSP technology. The A28 is a high performance compact active stereo loudspeaker. It has 150W of built in amplification with high resolution streaming capability - 24Bit/96KHz. It was conceived to be the perfect partner for the modern TV with ARC (HDMI) connectivity and of course the perfect streaming solution for your favourite music. A28 is a two-way bass reflex design with a cabinet made of MDF (up to 15mm thickness).

DRIVE UNITS

High frequency driver

For the A28 we have designed a custom soft dome tweeter to complement our high performance 4,5" midwoofers. This tweeter is the same as we use in the bigger brother A38. A well designed soft dome tweeter has a special strength in its natural timbre and musicality, something that can be hard to achieve with a metal dome tweeter. The silk textile material is formed under heat and produces a diaphragm that's light but strong and gives the right amount of stiffness and damping properties. The textile has a special coating applied to the surface to achieve a further improvement in damping of unwanted resonances.

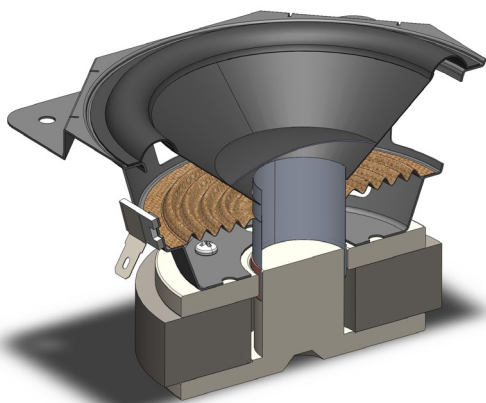


Benefits:

- Thanks to the use of natural silk material our high performance soft dome tweeter handles voices and instruments with exceptional clarity and fidelity.
- The wide dispersion gives a larger sweet spot where you can enjoy best possible sound quality.

Low frequency driver

In A28 we have implemented a custom designed 4,5" high quality midwoofer. This midwoofer has a specially treated paper cone to give an outstandingly natural sound reproduction. The driver can handle a lot of power and gives an impressive amount of output in small to medium sized rooms.



Benefits:

- The small driver size gives an uncoloured and precise voice reproduction.
- Another advantage of using a small driver is the inherently fast and detailed bass reproduction.
- Thanks to the use of our advanced DSP we can push the woofer far beyond what's possible in a passive speaker. The amount of bass output is impressive.

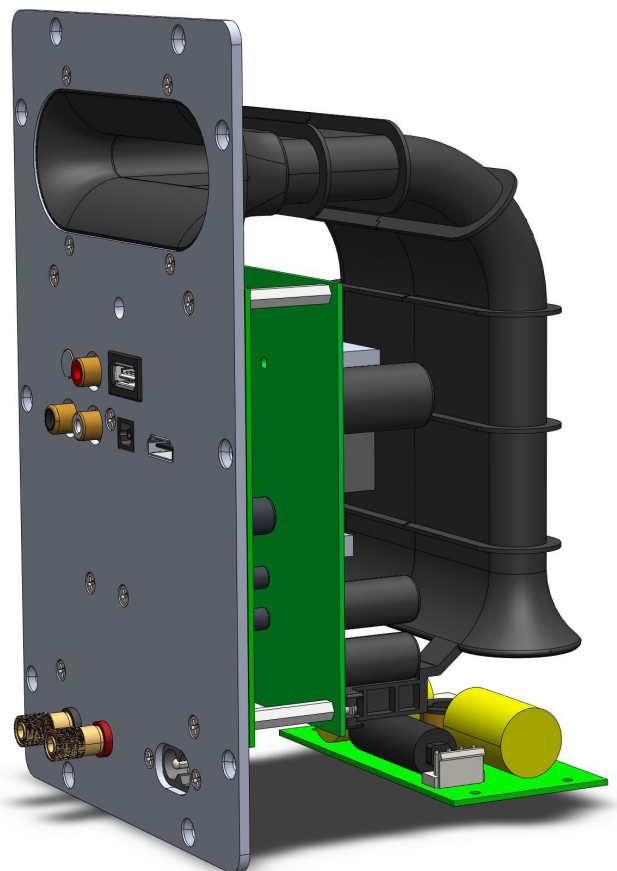
AMPLIFICATION

Two channel amplifier

The core of the A28 is a highly efficient, DSP controlled, Class D amplifier with a total power output of 150W, 75W for each channel. The A28 is a hybrid active/passive speaker design and houses a high quality passive crossover in both cabinets. All performance aspects and equalization are controlled with Digital Signal Processing (DSP). The DSP-processor is handselected from legendary Analog Devices.

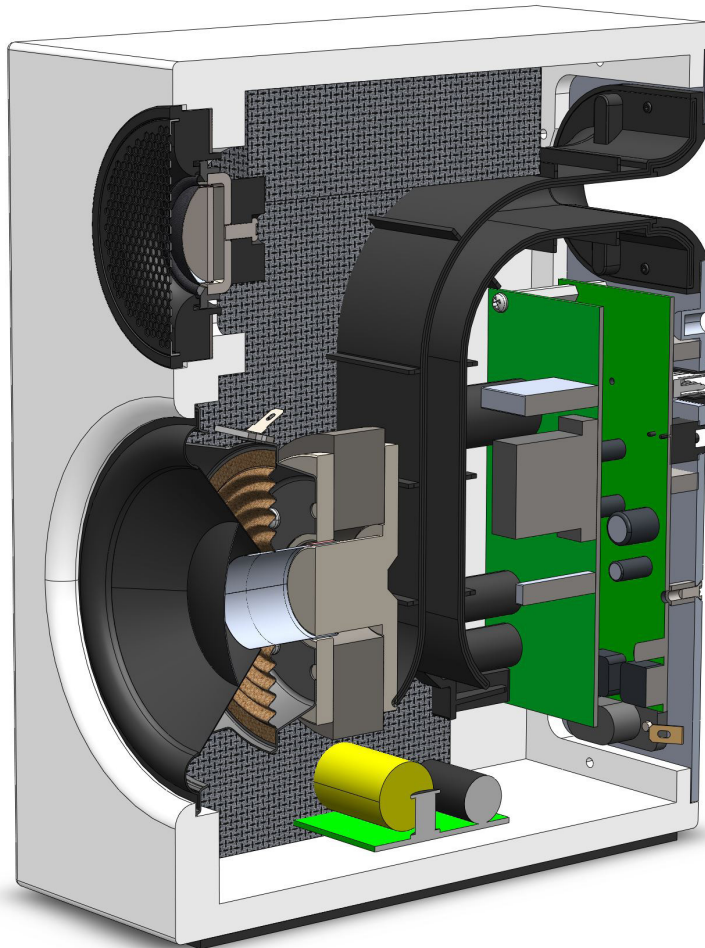
The passive crossover can, thanks to the use of DSP, be kept as simple as possible. The benefit is higher system sensitivity, much improved linearity and a more transparent sound reproduction.

The Left speaker houses all the active electronics and powers the Right speaker using a standard 2-conductor OFC speaker cable.



Benefits:

Thanks to the use of advanced DSP and efficient Class D amplification technology the A28 delivers an impressive output and stunningly musical realism considering the very modest price. The built-in amplifiers are optimized for the drive units and have total control of the speaker even under high peak SPL.



THE CABINET

Enclosure design

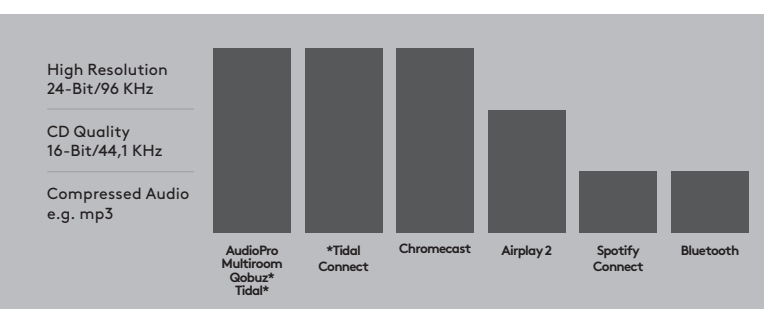
The A28 is made from acoustically inert MDF material with thickness up to 15mm. The cabinet is a bass reflex design to maximize bass extension and efficiency. With the use of a very large injection moulded and aerodynamically shaped bass vent we can keep air flow noise at a minimum. As a finishing touch a selection of satin finish coating is available.

Benefits:

MDF as a material is superior in a loudspeaker compared to plastic compounds used by some other manufacturers. The result is a cleaner sound with a more detailed sound stage.

STREAMING METHODS COMPARISON

AudioPro have worked with WiFi streaming for many years and the diagram below gives a good picture of why we strongly believe that WiFi is the choice for high quality audio products in the home. It's not only beneficial for ultimate streaming resolution - it is also the only way to stream music safely without losing connection when you walk around in your home.



*You will need a subscription to a music streaming supplier to get access to High Resolution Music.

INPUTS & OUTPUTS

The A28 has a vast selection of inputs to satisfy all possible requests.

INPUTS	TYPE
WiFi	24Bit/96 KHz
ARC	24Bit/96 KHz
Optical	24Bit/96 KHz
Line	RCA
Bluetooth	BT 4.2
OUTPUTS	
Sub Out	RCA
Speaker Cable	OFC copper 2-conductors, 4m length, stripped and tinned wire end.
Binding Post	Gold plated binding post allows stripped bare cable or 4mm banana connectors.

DIMENSIONS & WEIGHT

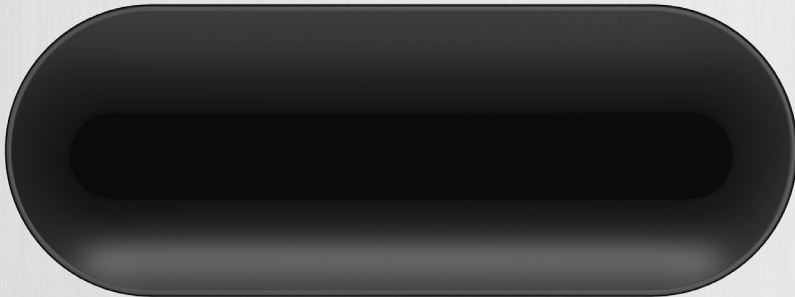
ENCLOSURE SIZE	
Height	230 mm
Width	150 mm
Depth	200 mm
Box size	490 x 295 x 360 mm (1 Pair)
WEIGHT	
Active (L)	3,5 kg
Passive (R)	3 kg
**Weight, 1 pair	7,9 kg

**Shipping



audio pro

SOUND OF SCANDINAVIA



LEFT SPEAKER



RESET



R



SERVICE



L



SUB OUT

LINE IN

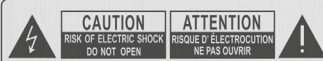
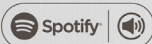
OPTICAL IN

TV/ARC

A28

☐ AC 100-240V ~ 50-60Hz, 2x75 W

DESIGNED & ENGINEERED BY
AUDIO PRO AB SWEDEN



SERIAL NO:

Audio Pro AB, Garnisonsgatan 52, SE-254 66 Helsingborg, Sweden

This device complies with part 15 of the FCC rules.
Its operation is subject to the following two conditions:
1. This device may not cause harmful interference, and
2. This device must accept any interference received,
including interference that may cause undesired operation.

CANICES-3(B)/ NMB-3(B)

FCC ID: 2AGNC-A38
IC: 20967-A38

Bluetooth®



CONFORMS TO
UL STD. 62368-1
CERTIFIED TO
CSA STD. C22.2
No. 62368-1

NOT SUITABLE FOR IN-WALL MOUNTING

SPEAKER OUT TO RIGHT



AC 100-240V ~ 50-60Hz, 2x75 W

