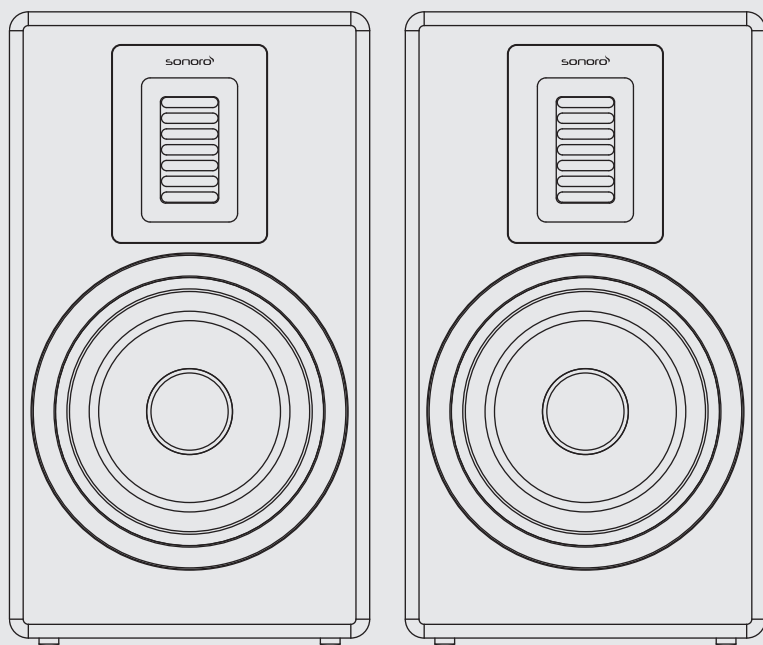


ORCHESTRA

SO-1100

2-WEGE HI FI LAUTSPRECHER
2-WAY HI FI LOUDSPEAKER
HAUT-PARLEUR HIFI À 2 VOIES



Bedienungsanleitung
Operating manual
Mode d'emploi

7. FEHLERBEHEBUNG

Fehlfunktionen können bei jedem elektrischen Gerät auftreten. Dies ist nicht unbedingt auf einen ORCHESTRA-Defekt zurückzuführen. Daher sollten Sie die folgende Tabelle überprüfen, um zu sehen, ob Sie das Problem selbst beheben können.

Störung	mögliche Ursache	Behebung
Kein Ton	Fehler am Verstärker	Schließen Sie einen bekanntermaßen funktionierenden Lautsprecher an die Verstärkerausgänge an. Wenn kein Ton zu hören ist, überprüfen Sie, ob die gesamte Elektronik eingeschaltet ist, ob die Signalführung korrekt ist, ob die Quelle aktiv ist, ob die Lautstärke eingestellt ist usw.
	Die Lautsprecherkabel sind nicht richtig angeschlossen	Überprüfen Sie, ob alle Kabel zwischen Verstärker und ORCHESTRA-Lautsprecher korrekt angeschlossen sind.
Schlechte Reaktion auf niedrige Frequenzen	Lautsprecherkabel sind mit falscher Polarität verdrahtet	Überprüfen Sie, ob der Verstärkeranschluss (+) an den ORCHESTRA-Lautsprecher (+) angeschlossen ist. Überprüfen Sie erneut, ob der Verstärker(-)-Anschluss an den (-)-Lautsprecheranschluss von ORCHESTRA angeschlossen ist.
Ständige Geräusche wie Summen, Brummen	Schlechte Erdung des Verstärkers	Überprüfen und korrigieren Sie das Erdungsproblem des Verstärkers.
	Fehlerhaftes Kabel	Ersetzen Sie es durch ein gutes Kabel.
Intermittierende Wiedergabe wie z.B. Knackgeräusche oder Verzerrungen	Die Lautsprecherkabel sind nicht richtig angeschlossen	Überprüfen Sie alle Anschlüsse an Verstärker und ORCHESTRA, um sicherzustellen, dass sie korrekt und fest sind.

8. GARANTIE

Bei der Geltendmachung von Gewährleistungsansprüchen gilt das Folgende, ohne Ihre gesetzlichen Rechte einzuschränken:

- Gewährleistungsansprüche können nur innerhalb einer Frist von max. 5 Jahren (1 Jahr in Nordamerika und Australien), gerechnet ab dem Kaufdatum, geltend gemacht werden.
- Die sonoro audio GmbH repariert oder ersetzt ORCHESTRA nach eigenem Ermessen kostenlos alle Mängel, die auf Material- oder Herstellungsfehler innerhalb der Garantiezeit zurückzuführen sind.
- Im Falle einer Reklamation wenden Sie sich bitte an unseren Kundendienst. Die Kontaktdaten finden Sie auf der Hefrückseite oder unter www.sonoro.de.
- Nach der Reparatur oder dem Austausch von ORCHESTRA beginnt keine neue Garantiezeit. Die Garantiefrist von 5 Jahren (1 Jahr in Nordamerika und Australien) ab Kaufdatum bleibt bestehen.
- Ausgenommen von der Garantie sind Schäden durch unsachgemäßen Gebrauch, normale Abnutzung sowie Mängel, die den Wert oder die Gebrauchstauglichkeit von ORCHESTRA nur geringfügig beeinträchtigen sowie Änderungen, die nicht von unserem autorisierten Service-Center vorgenommen wurden.

TABLE OF CONTENTS

1. INTRODUCTION	7
2. GETTING TO KNOW YOUR ORCHESTRAS	8
3. GETTING STARTED	8
3.1 Unpacking ORCHESTRA.....	8
3.2 Remove the speaker mesh.....	9
3.3 Locating ORCHESTRA.....	9
3.4 Bass Port plug.....	9
4. CLEANING	10
5. TECHNICAL DATA.....	10
6. DISPOSAL AT END OF USEFUL LIFE	10
7. TROUBLESHOOTING.....	11
8. WARRANTY	11
9. SAFETY INSTRUCTIONS.....	17

1. INTRODUCTION

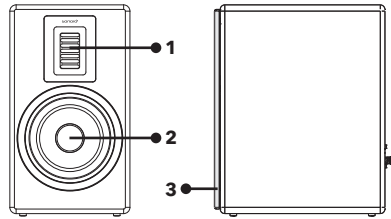
Thank you for purchasing the ORCHESTRAS. This operating manual provides all the information required for trouble-free and safe operation of the ORCHESTRAS. It is the users responsibility to make sure, the speaker is positioned, connected and used in a safe way. The images in this operating manual are intended to illustrate the actions necessary to operate the ORCHESTRAS.

ORCHESTRA is intended for personal use only. It is not intended for commercial use.

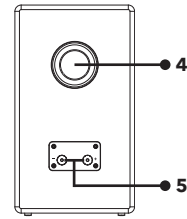
Enjoy your ORCHESTRAS!

2. GETTING TO KNOW YOUR ORCHESTRAS

Front and side view



Rear and back view



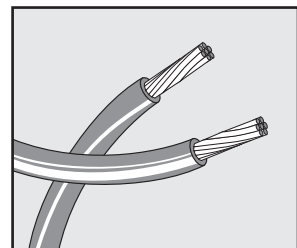
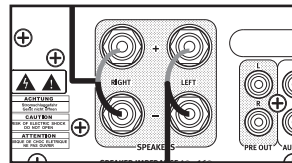
1. AMT tweeter
2. Woofer speaker
3. Speaker mesh
4. Bass port
5. Connectors (- +)

3. GETTING STARTED

3.1 UNPACKING ORCHESTRA

1. Take the ORCHESTRAS out of the packaging and check whether the ORCHESTRAS or the individual parts exhibit damages. If this is the case, do not use the ORCHESTRAS. Should you detect any damage, contact your dealer or sonoro audio GmbH customer support immediately.
2. Check to make sure that the delivery is complete (2 speakers, 2 speaker meshes, 2 bass plugs).
3. Place the ORCHESTRAS at a suitable and safe location. If you want to put your ORCHESTRAS on a natural wood surface, please make sure that it is suitable. On oiled and waxed surfaces, stains may occur.
4. **Do not touch or push the woofer and tweeter on the front of ORCHESTRA. This can destroy the speaker.**

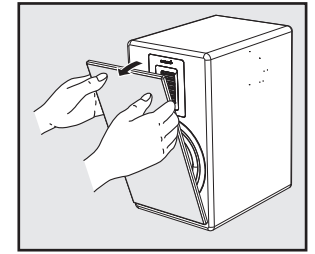
ORCHESTRAS can be connected to amplifier as show below. To avoid short circuits, please first switch off the amplifier to which you want to connect your ORCHESTRAS. Connect the right speaker to the right and left speaker to the left channel of your amplifier. Be careful not to reverse the polarity of + and -.



- ⚠ When connecting the speaker cable, take notice of the followings:
- Do not let the bare wires of the speaker cable touch one another.
 - Do not let the bare wires of the speaker cable come into contact with ORCHESTRA's rear panel and screws.

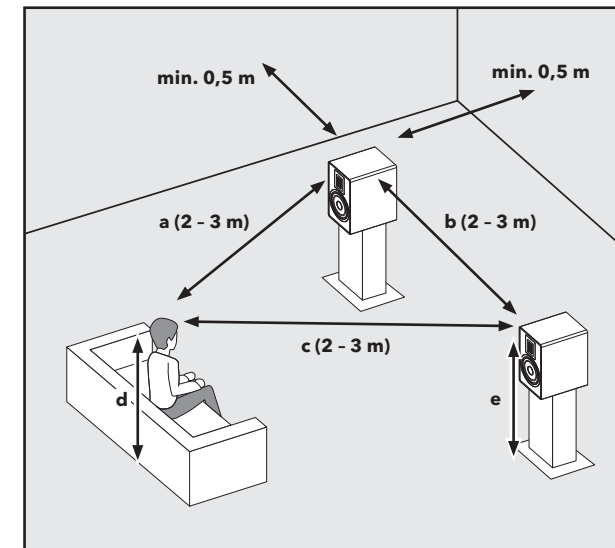
3.2 REMOVE THE SPEAKER GRILLE

The speakers can be operated with or without the speaker grille.



GB

3.3 LOCATING ORCHESTRA



The distance between the speakers and the distance to your listening position should form an isosceles triangle.

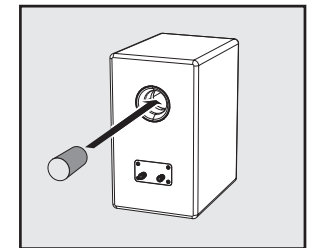
$$a = b = c$$

When you are in your preferred listening position, the tweeter of your ORCHESTRA speakers should be at the same height as your ears.

$$d = e$$

3.4 BASS PORT PLUG

If you need to place your speakers too close to the back wall or on a shelf, the bass may be perceived as too strong. In this case, inserting the foam plug into the bass reflex tube may improve the sound. Please never push the plug completely into the bass reflex tube!



4. CLEANING

- Cleaning off fingerprints and light soiling: Clean ORCHESTRA only from the outside with a soft, dry cloth.
- Cleaning off heavy soiling: Clean ORCHESTRA only from the outside with a slightly damp cloth and then dry ORCHESTRA with a soft, dry cloth.
- All other cleaning methods may damage your ORCHESTRAS.

⚠ ATTENTION!

Do not try to clean the drivers of MAESTRO, this may destroy them!

5. TECHNICAL DATA

Specification	Value
Type	2-way bass reflex
Dimensions (W × D × H)	approx. 210 x 288 x 365 mm
Weight	approx. 10 kg/pcs
Operating temperature	0°C ~ +40°C
Cabinet	High-density fiberboard (HDF)
Recommended amplifier power	50-170 W
Woofers	6" PE-coated paper driver with die-casting chassis and double magnet
Tweeter	Air Motion Transformer (AMT), approx. 85 cm ² effective area, neodymium magnet
Impedance	4Ω
Frequency response	44 Hz - 28 kHz @ -6 dB
Sensitivity	88 dB SPL (2.83 V RMS, 1 m)

Specifications are subject to change without notice.

6. DISPOSAL AT END OF USEFUL LIFE



Do not dispose of in household waste. Devices that are marked with this symbol (see figure) should not be disposed of in household waste. They must be returned to a collection point for the recycling of electrical and electro-technical devices. Information regarding the disposal of old equipment can be obtained from your municipality, local waste disposal company and the store where you purchased this device. Proper disposal of old devices prevents environmental damage and does not jeopardise your health.

7. TROUBLESHOOTING

Malfunctions can occur with any electrical equipment. This is not necessarily due to ORCHESTRA defect. As such, you should check the following table to see if you can eliminate the problem yourself.

Malfunction	Possible cause	Solution
No sound	Amplifier problem	Connect a known working loudspeaker to the amplifier outputs. If there is no sound, verify all the electronic are on, the signal routing is correct, the source is active, the volume is tuned up, etc.
	The speaker cables are not connected properly	Check all the connected cables in between amplifier and ORCHESTRA's speaker terminal are connected properly.
Poor low frequency respond	Speaker cables are wired in wrong polarity	Check the amplifier (+) terminal is connected to ORCHESTRA's (+) speaker terminal. Again, checked the amplifier (-) terminal is connected to ORCHESTRA's (-) speaker terminal.
Constant noise such as buzzing, humming	Poor grounding of the amplifier	Check and correct the amplifier grounding problem.
	Faulty cable	Replace with a good cable.
Intermittent output such as cracking or distortion.	The speaker cables are not connected properly	Check all connectors at amplifier and ORCHESTRA to make sure that they are correct and tight.

8. WARRANTY

When submitting warranty claims, the following applies without restricting your legal rights:

- Warranty claims can only be asserted within a period of max. 5 years (1 year in North America and Australia), calculated from the date of purchase.
- sonoro audio GmbH shall, at its own discretion, repair or replace ORCHESTRA free of charge any defects caused by material or manufacturing defects within the warranty period.
- In case of a complaint, please contact our customer service department. You can find contact details on the back cover or at www.sonoro.de.
- No new warranty period begins following repair or replacement of ORCHESTRA. The warranty period of 5 years (1 year in North America and Australia) from date of purchase remains applicable.
- Excluded from the warranty are batteries, damage caused by improper use, normal wear and tear, as well as defects which only minimally affect the value or usability of ORCHESTRA. The warranty also expires in case of any modifications not made by our authorised service centre.

DISTRIBUTED BY

TURA

www.turascandinavia.com