

MiniFinder® Nano

Quick Guide

Real-Time Tracking via MiniFinder GO

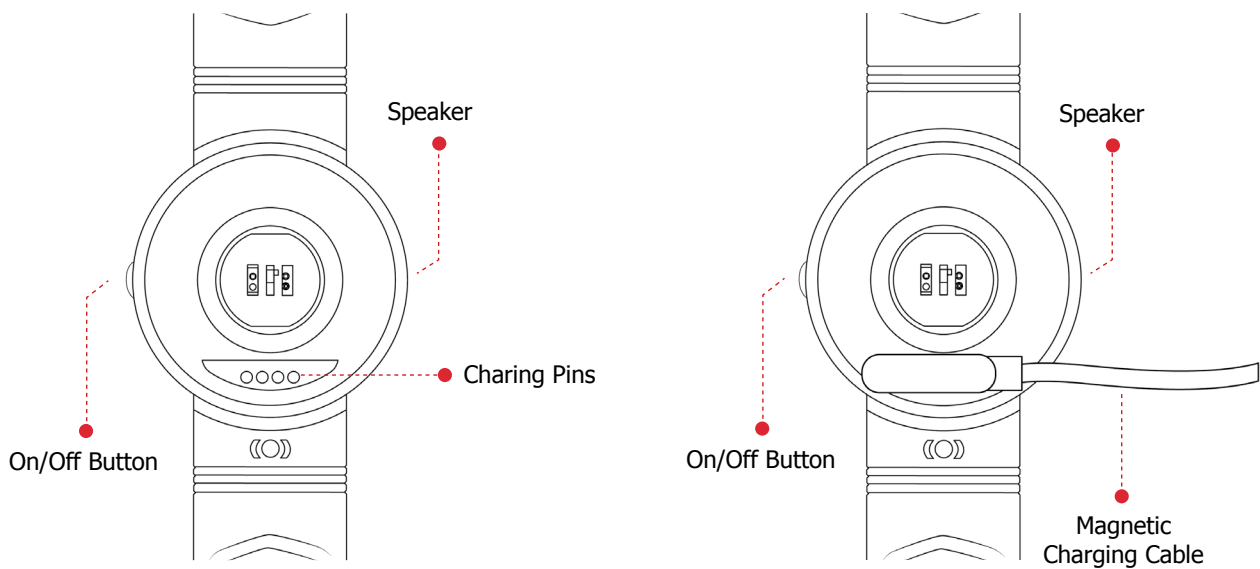


INTRODUCTION

The goal of this quick guide is to help you get started with your MiniFinder® Nano and live tracking via MiniFinder GO Tracking System in the shortest possible time.

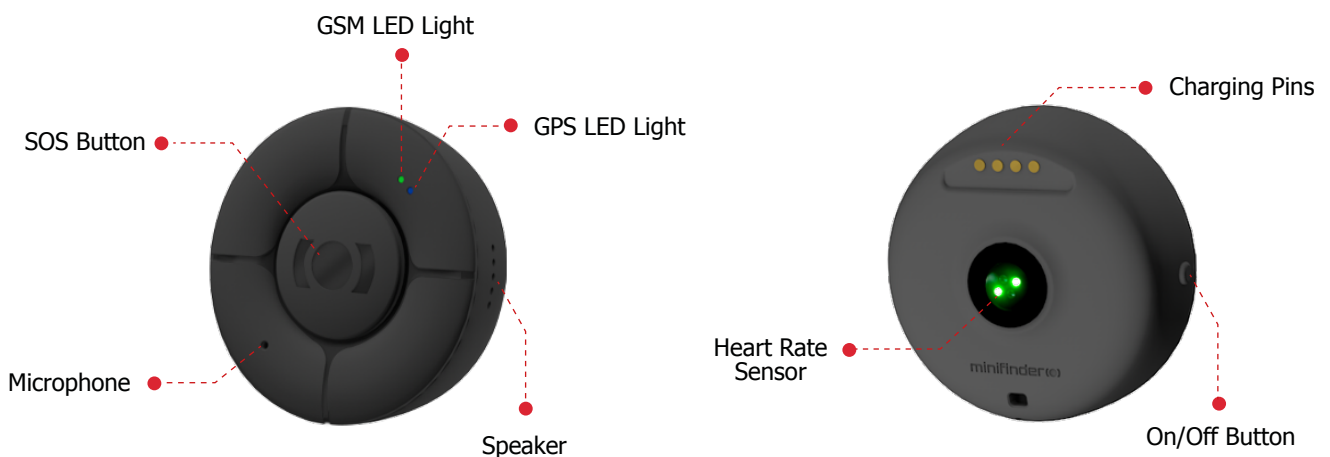
Before the first use, please charge the device for 4h. Next time device is fully charged after 2h. Please charge the device with the included USB cable. Connect it to a computer or to a power adaptor, then Nano starts automatically as soon as it gets power.

Place the magnetic charging cable against the charging pins to charge. See the picture below.



HARDWARE OVERVIEW

The following illustration describes the different parts of the unit and the functions.



NOTE! If you have received a login information for the APP from MiniFinder, please skip the device registration steps 1 and 2 below.





DEVICE REGISTRATION

- 1 Please go to my.minifinder.com to create your account and activate your device.

Register your MiniFinder

Your e-mail

Device Type

IMEI number ⁱ

PACKAGE
 00000 IMEI

Password

Repeat Password

LET'S GO

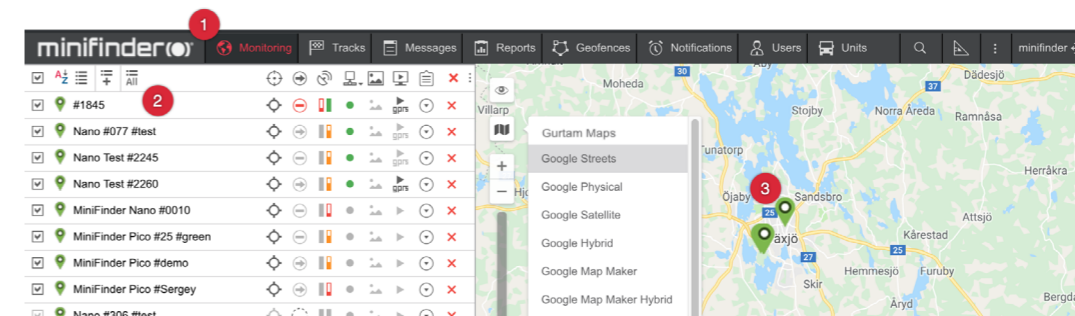
- 2 Before starting the tracking for the first time, please make sure to place the device outdoors for **5-10 minutes** for faster fixing against **GPS satellites**. Start the device by pressing and holding the **on/off** button for **3 seconds**.

REAL-TIME TRACKING VIA MINIFINDER GO

After subscribing to MiniFinder GO tracking service, you can log in to <https://go.minifinder.com> with your login details or download the MiniFinder GO app from the Apple App Store or Google Play. Start the app or open your browser to log in.



Here is how to track through web browsers on your computer:
 Select (1) **Monitoring** in the top menu and (2) **then click on your device** to display its (3) **real-time position** on the map.



For more information about the various parts and functions of the map, please see "MiniFinder GO Quick Guide" via the link below.

OTHER INFORMATION

The device is charged through the supplied micro USB cable either via a computer or a power adaptor with USB output.

MiniFinder® Nano & GO User Manual

For more functions and commands, please download the complete user manual:

 [minifinder-nano-minifinder-go_user_guide-en](#)

MiniFinder GO Quick Guide

To get started with live tracking, please read "MiniFinder GO Quick Guide":

 [minifinder-go_quick_guide-en](#)

minifinder ®

Support:

support@minifinder.com

Telephone:

+46(0)470-786833

Website:

www.minifinder.com